

Alto Sax

# M-07 Love Me Do

新郎新婦退場

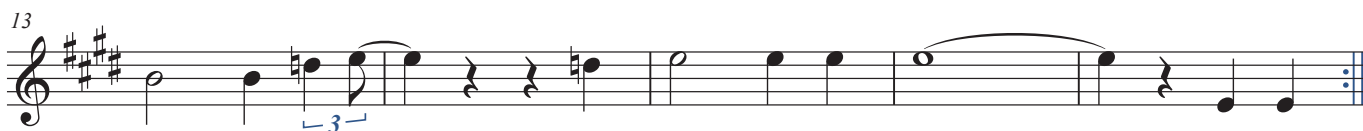
♩ = 155

Intro.

1st Tacet



A



B

E 4beat  
ad lib solo

A

E

A

E

X-Time



全員がハケ終わってから、  
音楽を聞かせるために少しの間演奏してから終わる。

Piano

# M-07 Love Me Do

新郎新婦退場

♩ = 155

キャンディ先生のカウントでスタート

**Intro.**

Piano

G C G C

The introduction consists of four measures. The treble clef has a key signature of one sharp (F#) and a 4/4 time signature. The bass clef has a key signature of one sharp (F#). The first measure has a whole note G in the bass and a whole note G in the treble. The second measure has a whole note C in the bass and a whole note C in the treble. The third measure has a whole note G in the bass and a whole note G in the treble. The fourth measure has a whole note C in the bass and a whole note C in the treble. There are triplets of eighth notes in the treble of measures 2, 3, and 4.

Pno.

G C G G

Measures 5-8. Measure 5: G in bass, G in treble. Measure 6: C in bass, C in treble. Measure 7: G in bass, G in treble. Measure 8: G in bass, G in treble. There are triplets of eighth notes in the treble of measures 6 and 7.

Pno.

**A** G C G C

Measures 9-12. Measure 9: G in bass, G in treble. Measure 10: C in bass, C in treble. Measure 11: G in bass, G in treble. Measure 12: C in bass, C in treble.

Pno.

G C C C C x2

Measures 13-17. Measure 13: G in bass, G in treble. Measure 14: C in bass, C in treble. Measure 15: C in bass, C in treble. Measure 16: C in bass, C in treble. Measure 17: C in bass, C in treble. The section ends with a double bar line and a repeat sign.

Pno.

**B** G C G C X-Time G

Measures 18-21. Measure 18: G in bass, G in treble. Measure 19: C in bass, C in treble. Measure 20: G in bass, G in treble. Measure 21: C in bass, C in treble. The section ends with a double bar line and a repeat sign.

全員がハケ終わってから、  
音楽を聞かせるために少しの間演奏してから終わる。